



Annual Report 2025



WADHWANI AI

Image Credit

Rohit Jain & Anshul Duggal

CONTENTS

1	From the Founders	3
2	Notes from the Leadership	5
3	Our Ecosystem	7
4	Our Footprint	9
5	The BDA Framework	11
6	Journey of a Solution	13
7	Health at a Glance	15
8	Education at a Glance	35
9	Agriculture at a Glance	43
10	Capacity Building & Government Advisory	53
11	Media Highlights	55
12	Research at Wadhvani AI	57
13	Abbreviations	59

AI built for public systems



Health



Education

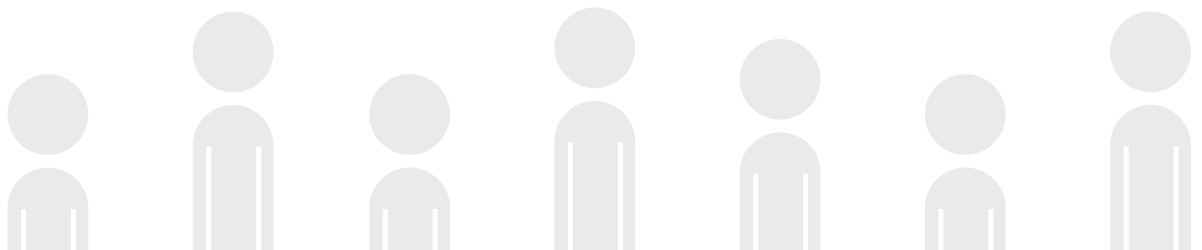


Agriculture

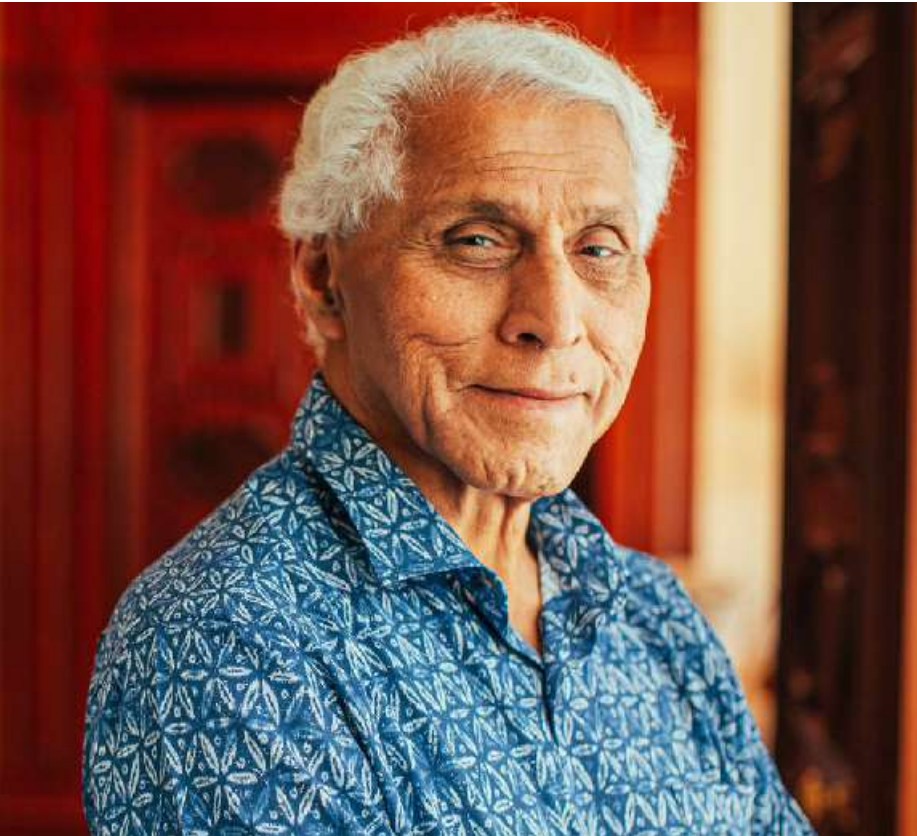
Wadhvani Institute for Artificial Intelligence (Wadhvani AI) is a cross-domain, not-for-profit institute with a mission to improve the lives of the underserved by innovating, building, and deploying AI solutions that create a meaningful impact at scale.



Wadhvani AI was inaugurated by the Hon'ble Prime Minister of India, Shri Narendra Modi, on February 18, 2018.



FROM THE FOUNDERS



Artificial intelligence will shape the future only if it strengthens the public institutions that shape our everyday lives.

Dr. Romesh Wadhvani

Co-Founder, Wadhvani Institute for Artificial Intelligence

Our mission is to create ethical and inclusive AI that works reliably in real-world conditions, and expands access to quality health, education, and livelihoods.

Dr. Romesh Wadhvani is the Founder of the Wadhvani Foundation and Co-Founder of Wadhvani AI. A Silicon Valley entrepreneur and philanthropist, he built three successful companies, including the \$3.5 billion Symphony Technology Group. A Padma Shri awardee and member of the Gates-Buffett Giving Pledge, he holds a B.Tech from IIT Bombay and a Ph.D. in Electrical Engineering from Carnegie Mellon University. Former US President Barack Obama also appointed him to the Board of Trustees of the John F. Kennedy Center.





The next frontier for AI adoption goes beyond integration, focusing on systems that are intelligent, adaptive, and equitable by design.

Sunil Wadhvani

Co-Founder, Wadhvani Institute for Artificial Intelligence



AI creates lasting value in public systems when it is built to work within them — not as an external layer, but as part of how institutions function, learn, and improve over time. When intelligence is embedded into everyday processes, it strengthens consistency, responsiveness, and fairness in service delivery. This is how technology can meaningfully support public institutions and the communities they serve.

Sunil Wadhvani is an entrepreneur, investor, and philanthropist. He co-founded the Wadhvani Institute for Artificial Intelligence and was the Co-Founder and CEO of iGate Corporation, which grew to over 34,000 employees and was acquired for \$4.5 billion in 2015. A distinguished Alumnus of IIT Madras and Carnegie Mellon University, he has served on the boards of Carnegie Mellon, George Washington University, and United Way Worldwide.



NOTES FROM THE LEADERSHIP

2025 was a defining year for Wadhvani AI, as we scaled our AI solutions to transformative system-level deployments across multiple Indian states in health, education, and agriculture, reaching over 190+ million people* through more than 25 solutions.

Through deep partnerships with national agencies, including the Ministry of Health and Family Welfare and the Ministry of Agriculture, alongside multiple state governments, we embedded AI-enabled decision support into frontline workflows, empowering workers, teachers, and farmers with AI solutions that made their work easier for them.

This scale became possible because of the trust we've earned from governments and partners who rely on us to deploy AI responsibly in core public systems, with human-in-the-loop safeguards, explainable models, and proven outcomes. Our "Impact Lens," the Breadth-Depth-Attribution Framework, quantifies reach, real-world influence, and AI-attributable gains, guiding better decisions in AI interventions.

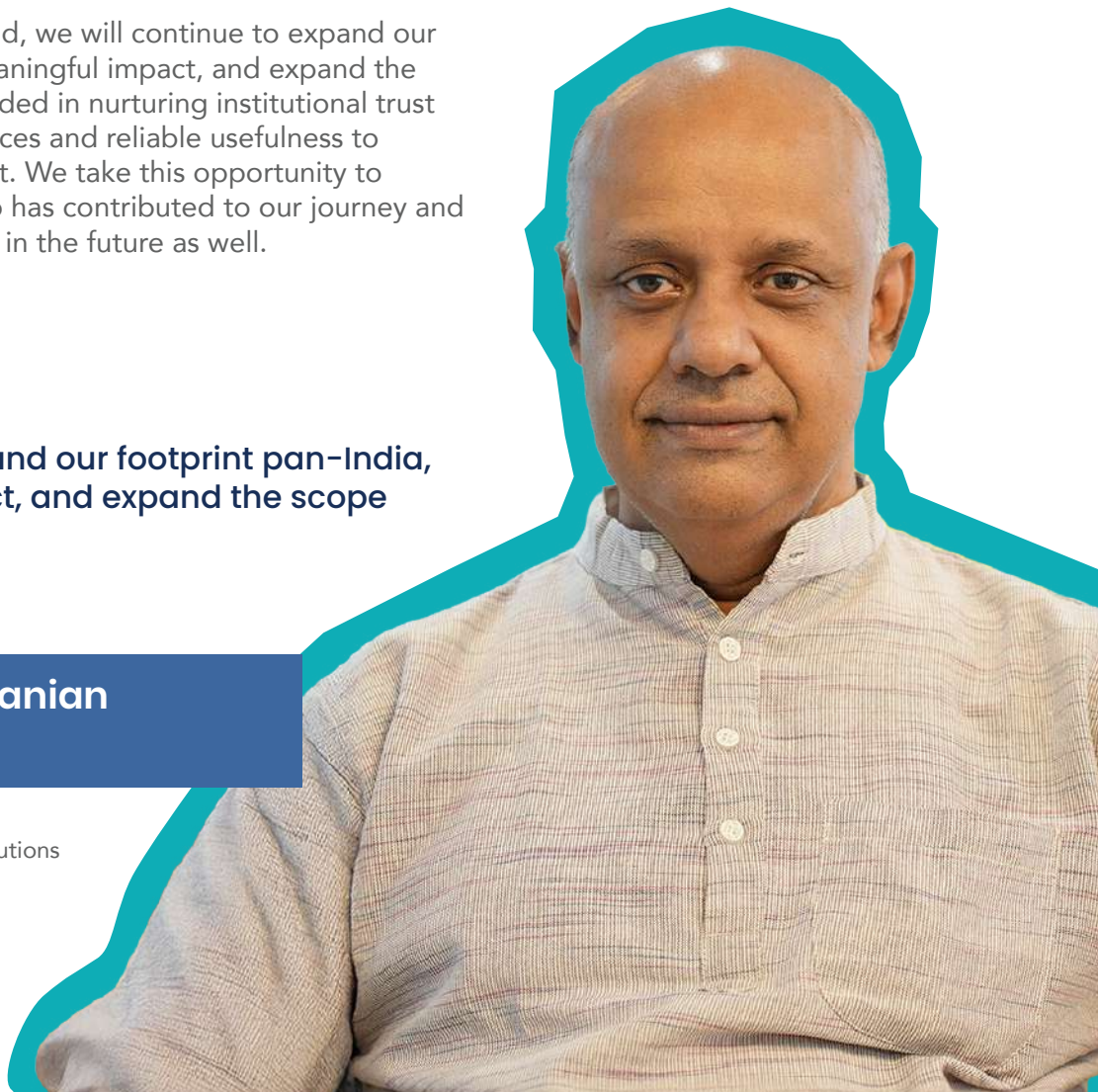
Looking into 2026 and beyond, we will continue to expand our footprint pan-India, drive meaningful impact, and expand the scope of our work—all grounded in nurturing institutional trust through responsible AI practices and reliable usefulness to ensure enduring social impact. We take this opportunity to sincerely thank everyone who has contributed to our journey and look forward to their support in the future as well.



We will continue to expand our footprint pan-India, drive meaningful impact, and expand the scope of our work.

Shekar Sivasubramanian
Head, Wadhvani AI

*Cumulative reach through tech solutions



In 2025, we progressed along two dimensions of our applied AI work: breadth and depth. We significantly expanded our reach, reaching millions of school children through our reading fluency assessment AI, nearly every TB patient in the country through our TB solutions suite, and hundreds of millions of eSanjeevani users.

At the same time, we deepened our existing projects to improve both intervention quality and impact. We are now advancing generative AI for active remediation in education using information collected through automated assessments, closing gaps in TB cough-sound screening accuracy, validating TB vulnerability hotspot predictions, strengthening Health Vaani, a chatbot for frontline health workers, and expanding AI models to estimate children's anthropometric parameters from video.

In the coming year, we aim to attribute measurable improvements in people's lives to the underlying AI technology, remaining true to our mission of creating positive social impact in India through the judicious and thoughtful use of AI. This is not easy. Technologies and scientific approaches developed and prioritized in the Global North do not work "as is" in the Indian context; they must be adapted, refined, and often rebuilt from the ground up. Even when technically successful, adoption and deployment at scale require collaboration across a diverse set of stakeholders and sustained capacity building in local contexts.

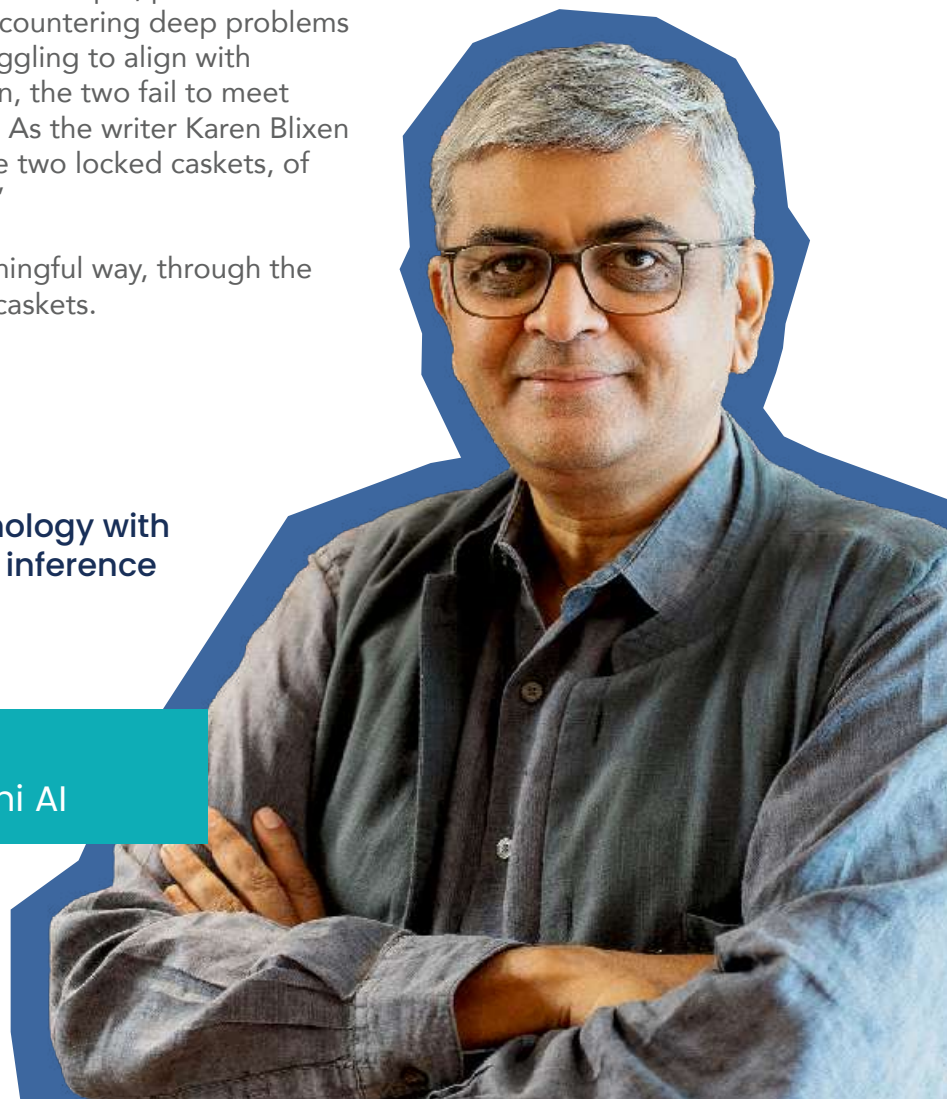
We bring together high-end technology with simple, practical deployment inference pathways, often encountering deep problems searching for solutions, and solutions struggling to align with meaningful problem statements. Too often, the two fail to meet because of fundamental incompatibilities. As the writer Karen Blixen observed, "... the rich and the poor ... are two locked caskets, of which each contains the key to the other."

It is our task—perhaps in a small but meaningful way, through the use of technology—to help unlock those caskets.



We bring together high-end technology with simple, practical deployment and inference pathways.

Dr. Alpan Raval
Chief Scientist, AI/ML, Wadhvani AI



OUR ECOSYSTEM

Working alongside public systems

We collaborate closely with governments and partners to embed AI into real-world workflows.

Government:



Implementation Partners:



Donors:



OUR FOOTPRINT

AI at scale,
across public systems

Strategic partner to the IndiaAI Mission

Pan-India deployment

25 Solutions*

36 States & Union Territories

190 million+
individuals** reached through tech solutions

*Deployed and under development

**Cumulative reach through tech solutions

IMPACT LENS – THE BREADTH, DEPTH & ATTRIBUTION (BDA) FRAMEWORK

At Wadhvani AI, our solutions work in environments where innovation and technology contend with real-world constraints. Our Breadth, Depth, and Attribution (BDA) Framework embodies our philosophy of AI for social impact as a disciplined practice rather than an abstract aspiration and a consistent way to think about how to build every AI solution.

The BDA Framework:



Guides how we design, deploy, and evaluate our AI solutions



Reflects our belief that responsible and impactful AI must be understood not only through technical sophistication but also how it performs in real world conditions



Translates complex AI work into clear, human-centered narratives and real-world performance, contextual adaptability, and measurable impact.

Breadth: Designing for scale and inclusion

We build AI solutions that are designed to operate within real public systems, at scale- where they are deployed, whom they serve, and how consistently they function across diverse environments. It ensures that AI is not evaluated in isolation or in pilot settings alone, but through its ability to reach the people and institutions it is intended to support.

Case Study:

- The Media Disease Surveillance solution is integrated into national disease surveillance workflows and processes news from thousands of digital sources daily.
- Cough Against TB has been deployed across 17 states and 103 districts, supporting large-scale community screening under the National Tuberculosis Elimination Programme.
- Oral Reading Fluency solution has assessed over 7.9 million students across 74 districts in Gujarat and Rajasthan, and supports over 285,000 teachers across over 97,000 government schools.
- Health Vaani is designed for use by Anganwadi Workers in low-connectivity settings, supporting frontline workers across six states (Pilot).

Depth: Developing reliable AI systems for the real world

The technical and operational maturity of our AI solutions and its ability to perform reliably in real-world conditions underlines the depth of our solutions. It examines what the system does, how it works, and how well it holds up when deployed at scale. This includes the quality and diversity of our data, the design of our AI models, and clearly reported performance metrics such as accuracy, sensitivity, and precision.

Case Study:

- The Media Disease Surveillance solution applies multilingual NLP models combined with human-in-the-loop verification, enabling 97% coverage of outbreak-related news, compared to 3% through manual scanning.
- Cough Against TB combines cough audio with symptom data to enable early TB screening, achieving 90% sensitivity and 69% specificity, while being optimized to run offline on low-end smartphones.
- Oral Reading Fluency uses custom-trained speech recognition models with 94% precision in Hindi and 95% precision in Gujarati to assess foundational literacy at scale.

Attribution: Demonstrating impact through evidence

The Attribution framework looks at the changes that have resulted from an AI solution, how those changes are measured, and how confidently they can be attributed to the AI solution. This distinction is particularly important in public systems, where multiple interventions and external factors influence outcomes. It helps to anchor AI solutions in accountability, and encourages careful and context-aware assessment.

Shaping Principles into Practice

Together, the Breadth, Depth, and Attribution framework provide a coherent and holistic way of understanding not just what our AI solutions do, but how they create value within public systems. These dimensions help ensure that our work is context-aware at scale, technically rigorous in practice, and accountable in its outcomes. It is a transparent and replicable model for demonstrating progress.

Case Study:

- Cough Against TB has significantly increased presumptive TB detection rates, flagging 12–16% of screened individuals.
- Prediction of Adverse TB Outcomes has demonstrated a 31% reduction in loss-to-follow-up and mortality in deployed geographies.
- Oral Reading Fluency shows attribution through system-level efficiency gains, reducing assessment time from ~10 minutes to around 1 minute per student, saving approximately 2 million teacher-hours, and informing statewide remediation programs, where 62% of students in Rajasthan were identified as needing targeted support.



THE JOURNEY OF A WADHWANI AI SOLUTION

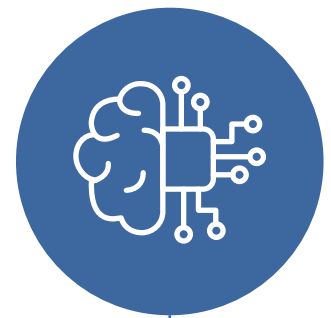


Identify a system opportunity

Start from real opportunities to strengthen services using data and AI. Anchor every use case in field realities and constraints.

As far as possible, work within existing government platforms and data systems. Ensure data is usable, representative, and responsibly handled.

Collect and prepare data



Develop and validate AI models

Build models that are accurate and reliable in real-world settings. Test rigorously across diverse settings and cohorts.

This journey reflects our belief that impact emerges when innovation, deployment, and ecosystem readiness advance together.



From problem identification to population-scale deployment



Translate AI into simple, practical tools for everyday work. Design for frontline needs.

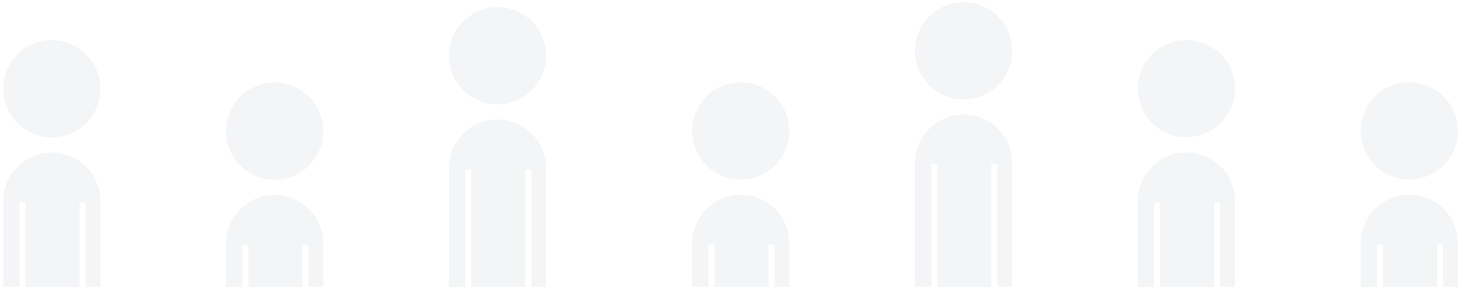
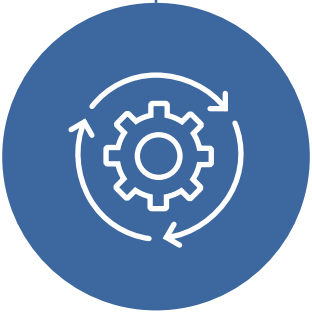
Build usable products

Evaluate outcomes from real-world deployments. Continuously refine solutions based on feedback from the ground.

Measure and learn

Integrate into public platform

Embed solutions into large-scale systems and workflows. Enable long-term adoption, ownership, and sustainability.



HEALTH: AT A GLANCE

Strengthening public health systems through applied AI

India's public health system operates at enormous scale and complexity. It manages infectious diseases and chronic conditions, maternal and child health, diagnostics, screening, and real-time surveillance, all often under workforce, data, and visibility challenges that arise at scale. Timely detection, accurate measurement, and prioritized action are critical, but complex to achieve consistently across geographies.

Our health portfolio is built to strengthen this ecosystem by embedding AI directly into national and state health programs. Our solutions support frontline workers, laboratories, administrators, and surveillance teams by improving early identification, targeting resources more effectively, reducing manual burden, and enabling faster, data-driven decisions without disrupting existing workflows.



Topline Impact

Pan-India deployment

8 solutions deployed

Solutions integrated into government platforms

178+ million individuals reached through AI-enabled public health systems

What AI Enabled



Earlier detection



Smarter risk-based targeting



Timely diagnosis and decision support



Prioritized follow-up



Stronger system responsiveness at scale

System Impact

- **Improved reach**

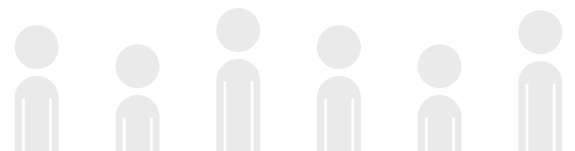
AI embedded into national and state health programs operating at population scale

- **Stronger decision support**

Risk stratification, diagnostic support, and alerts integrated into everyday workflows

- **Operational efficiency**

Reduced manual effort, faster reporting, and effective use of available resources



COUGH AGAINST TB (CATB)

Cough Against TB (CATB) is an AI-powered, non-invasive mobile screening application that analyzes cough sounds and symptoms to identify individuals with presumptive pulmonary tuberculosis (TB) at the point of care, even offline.

It complements symptom-based screening by providing frontline health workers with a fast, consistent, and reliable decision support method to detect TB early, including asymptomatic individuals, thereby supporting improved case detection in both community and facility-based settings.

Impact

Deployed across

17 **103**
states and districts

More than

175,000+

individuals aged 7-100 years
screened till date

27,500

identified as presumptive TB

12-16%

of diagnosed persons with TB
found asymptomatic, helping
break silent chains of transmission





VULNERABILITY MAPPING FOR TUBERCULOSIS (VMTB)

The Vulnerability Mapping (VMTB) solution is an AI-driven geospatial analytics tool that identifies geographic areas with a higher likelihood of TB risk by analyzing patterns between notified TB cases and over 20 geospatial and health-determining features. The solution is integrated into the national Ni-kshay portal, enabling its use within existing TB program workflows.

It strengthens TB program planning by enabling health authorities to clearly visualize where vulnerability is concentrated and prioritize areas for focused action. The solution generates vulnerability scores at a 500 m × 500 m resolution, ranking locations into high, medium, and low-risk zones. This supports more precise case-finding, better use of program capacity, and sustained progress toward TB elimination.

Impact

682 districts across **31** states and union territories mapped to identify high TB-vulnerable areas

251% relative increase in TB case detection yield in Haryana

61% relative increase in TB case detection yield in Assam





PREDICTION OF ADVERSE TB OUTCOMES (PATO)

PATO is an AI-powered risk stratification solution that helps in the identification of Persons with TB (PwTB) at a higher risk of adverse outcomes (loss to follow-up or mortality) at the onset of TB treatment. It analyzes PwTB data to flag individuals who may need closer monitoring and additional support.

By enabling early and focused attention for high-risk PwTB, PATO supports timely, targeted interventions that strengthen treatment adherence, help reduce mortality, and prevent the development of drug-resistant TB, while enhancing the effectiveness of program delivery at scale.

The solution has been developed and deployed in collaboration with the Central TB Division (CTD) under the National TB Elimination Programme (NTEP), and is integrated into the Ni-kshay portal.

Impact

Analyzed treatment records for more than

2M+ PwTB

Flagged **800,000+** PwTB as high-risk for loss to follow-up or mortality

34K+ calls and

12K+ visits supported





MadhuNetrAI - DIABETIC RETINOPATHY (DR)

MadhuNetrAI is an AI-enabled screening solution that analyzes fundus images to support the early identification of Diabetic Retinopathy (DR), enabling ophthalmic technicians to reliably triage patients and streamline screening workflows even in offline settings. By bringing specialist-level screening support closer to primary care, the solution strengthens the existing eye-care ecosystem, optimizes the use of scarce ophthalmology expertise, and expands access to screening while supporting the prevention of avoidable vision loss through timely referral and treatment.

The AI model improves diagnostic consistency by applying standardized DR classification and grading aligned with international benchmarks, assessing images across five severity levels—from no DR to proliferative DR—to support more consistent decision-making across screening programs.

Impact

~16,000

retinal images processed

8,800+

patients screened for Diabetic Retinopathy across **40** facilities in **21** districts spanning **11** states

3,000+

patients identified as referable cases, enabling timely intervention and reducing the risk of vision-threatening progression

1,000+

of these referable cases classified as Vision-Threatening Diabetic Retinopathy (VTDR), ensuring that the highest-risk patients received urgent and prioritized care



MEDIA DISEASE SURVEILLANCE (MDS)

Media Disease Surveillance (MDS) is an AI-powered media scanning solution developed to support proactive disease surveillance. It identifies potential disease outbreaks from online news reports in real time by scanning media sources for over 120 health conditions and alerting health authorities for verification and action.

The solution strengthens early warning capabilities by surfacing critical public health signals that often first appear in news and digital media. MDS functions as an assistive tool within the National Centre for Disease Control's Media Surveillance and Verification Cell (MSVC), with alerts reviewed and validated by human experts to ensure accuracy, accountability, and timely response.

Impact

500 million

news articles processed to date across 13 languages.

4X

more media alerts through AI over manual media scanning

98%

reduction in manual efforts



वीक्षण एवं सत्यापन कक्ष
TRAINING & VERIFICATION CELL
(IDSP)



HEALTH VAANI

Health Vaani is a mobile-first, AI-powered conversational knowledge assistant that enables India's frontline health workers to ask questions using voice or text and receive instant access to accurate, government-validated health and nutrition information. By placing trusted knowledge directly in their hands, the solution strengthens counselling, awareness generation, and service delivery, supporting consistent and timely decision-making at the community level.

Impact

Piloted in February 2025 with Anganwadi Workers across six districts in six states

10,000+
interactions

600+

Anganwadi Workers trained

8,000+
queries managed





CLINICAL DECISION SUPPORT SYSTEM (CDSS)

The Clinical Decision Support System (CDSS) is an AI-powered diagnostic assistance solution designed to strengthen the quality and efficiency of telemedicine consultations. Embedded within eSanjeevani, India's national telemedicine platform, CDSS supports doctors and Community Health Officers (CHOs) through structured and internationally standardized patient data capture, comprehensive case summaries, and assistive diagnostic insights. By enabling clearer and evidence-based clinical decision-making, the solution helps maintain quality of care at scale, even in high-volume and resource-constrained settings.

Impact

289 million+
assisted consultations

182 million+
patients supported

19 million consultations
with AI-assisted differential
diagnosis recommendations

230,000+
doctors and CHOs supported
nationwide





SHISHU MAAPAN (NEWBORN ANTHROPOMETRY)

Shishu Maapan is an AI-powered Newborn Anthropometry (NBA) solution that enables frontline health workers to capture accurate newborn measurements using an entry-level smartphone during home-based newborn care visits. Designed for use in the first 42 days of life, the application measures key indicators—including weight, length, head, chest, and mid-upper arm circumference—through a video-based, easy-to-learn workflow that replaces manual, equipment-heavy processes. By generating reliable, digitized measurements in real time, Shishu Maapan supports early identification of newborns at risk and enables timely referral, service delivery, and corrective action, strengthening the quality and efficiency of postnatal care.

Impact

21,000+

HBNC visits supported

700+

ASHA workers trained on using the solution

8,000+

newborns registered





PROTECTING SIGHT BEFORE IT FADES

AI-powered screening to catch diabetic eye disease before it steals vision.

For nearly two decades, optometrist Peera Ram Solanki has been a steady presence in the eye department of a district hospital in Rajasthan. Over the years, he has assisted ophthalmologists, worked in eye theatres, conducted refraction tests, and screened thousands of patients for diabetic retinopathy (DR), a leading cause of preventable blindness among people living with diabetes.

His interest in eye care began early.

“When I visited hospitals during my school days, I was fascinated watching doctors examine patients’ eyes. That’s when I decided I wanted to do this work,” he recalls.

Today, that childhood curiosity has become a daily responsibility—one that is growing more important as diabetes becomes increasingly common.

Peera Ram now sees many patients living with long-term diabetes, often unaware of its impact on vision.

“In people with diabetes, eyesight gradually declines as the small blood vessels in the retina become damaged. That is how diabetic retinopathy develops,” he explains.

Because the condition progresses silently, most patients notice symptoms only after vision loss has begun. Regular screening is critical to preventing avoidable blindness.

At the district hospital, retinal screening has been strengthened through the introduction of AI-assisted decision support. Through collaboration with the Government of Rajasthan and the Ministry of Health and Family Welfare, MadhuNetrAI, developed by Wadhvani AI, is supporting clinicians with efficient diabetic retinopathy screening and timely referrals for specialist care.





MadhuNetrAI was developed by Wadhvani AI in collaboration with Dr. Rajendra Prasad Centre for Ophthalmic Sciences, AIIMS Delhi, under the aegis of the Ministry of Health and Family Welfare.

After Peera Ram captures a retinal image using the hospital's fundus camera, the image is uploaded to the MadhuNetrAI platform. The system analyzes the image immediately and categorizes disease severity- No DR, Mild, Moderate, Severe, or Proliferative DR- helping clinical teams prioritize patients who need urgent attention.

"We capture the fundus image, upload it, and the report is generated immediately," Peera Ram says.

The AI-generated report is reviewed by ophthalmologist Dr. Vipul Nagar, who confirms findings and initiates treatment or referral where required. This allows screening to continue even when specialists are occupied with surgery or other clinical responsibilities.

"Even when the doctor is in the operation theatre, screening can continue," he explains.

For Peera Ram, the technology supports clinical work rather than replacing it.

By simplifying documentation, supporting follow-up, and enabling faster triage decisions, the system allows clinical teams to focus more time on patient care.

One afternoon, a patient from a village near Jalore arrived at the hospital with sudden vision loss after living with diabetes for several years. Peera Ram captured retinal images and uploaded them to MadhuNetrAI. The system flagged Proliferative Diabetic Retinopathy, indicating advanced disease with internal bleeding in the eye. Treatment began the same day.

Moments like these reinforce the importance of screening.

In a busy district hospital, screening has become more organised, timely, and responsive.

For Peera Ram, each patient screened is one more opportunity to prevent avoidable vision loss—and to ensure that people living with diabetes continue to see, work, and live independently.

EDUCATION: AT A GLANCE

Strengthening learning outcomes within public education systems

From foundational literacy to communication readiness, supporting equitable learning at scale.

Learning gaps emerge early and are not consistently visible through existing assessments. At the same time, spoken communication skills increasingly shape academic and economic opportunity. Across classrooms and digital learning platforms, consistent, comparable insight into how learners read, speak, and progress is not always available at scale.

Wadhvani AI's education portfolio focuses on converting everyday learning interactions into actionable system-level insights. By embedding AI-enabled assessment directly into government education platforms and national digital learning systems, these solutions support early identification of learning gaps, targeted remediation, and continuous skill development aligned with public education goals.



Topline Impact

Pan-state deployment in **Gujarat** and **Rajasthan**

National deployment through **SWAYAM** digital learning platform

2 Solutions integrated into government education systems

7.9 million school students assessed

27,000+ adult learners supported through spoken English assessment

What AI Enabled



Objective assessment



Visibility into reading and speaking skills



Early gap identification



Targeted remediation



Communication readiness at scale

System Impact

- **Population-scale assessment infrastructure**

AI-enabled oral and spoken-language assessments embedded within public platforms enable continuous measurement across diverse learner populations.

- **Data-informed instructional support**

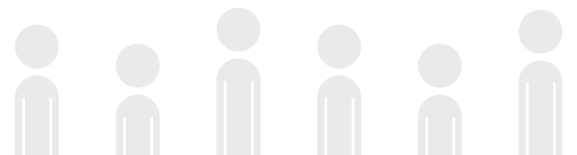
Granular diagnostics support teachers and course creators in planning targeted remediation and communication practice.

- **System visibility**

Standardized metrics generate comparable insights for districts, states, and national learning platforms.

Geographic Footprint

Statewide deployments in Gujarat and Rajasthan have been integrated into official education platforms, alongside national integration within SWAYAM's digital learning ecosystem.



ORAL READING FLUENCY (ORF)

ORF is an AI-enabled reading assessment solution designed to help education systems identify early reading gaps at scale and support targeted classroom remediation. Designed for real classroom conditions, including multi-grade and multi-level learning environments, and usable on teachers' smartphones in low-connectivity settings, the solution records students reading aloud and applies AI to generate fluency indicators such as reading speed, accuracy, and grade-level classification.

These insights are presented through simple dashboards that help teachers identify learner groups by reading proficiency and plan appropriate remedial support. By bringing consistency, speed, and objectivity to oral reading assessment, ORF enables early diagnosis of learning needs and strengthens foundational literacy in alignment with the goals of NEP 2020 and the NIPUN Bharat Mission. The solution is integrated with ShalaDarpan Shikshak App and SwiftChat, the official state digital platforms for Rajasthan and Gujarat, respectively.

Impact

17 million

assessments conducted

7.9 million

students assessed
(**4.4 million** in Gujarat;
3.5 million in Rajasthan)

285,000

teachers engaged

97,806

schools covered across
74 districts





संगम में है।

SPOKEN ENGLISH ASSESSMENT & PRACTICE (SEAP)

SEAP is an AI-enabled oral assessment solution designed to evaluate and strengthen spoken English proficiency at scale, helping learners build confidence, clarity, and fluency in real-world communication. Integrated within English and communication courses on SWAYAM, India's national digital learning platform, the solution enables learners to complete structured oral assessments by reading passages aloud, after which AI models generate granular feedback on pronunciation and reading speed.

Designed for multilingual learners for whom English is a second language, SEAP operates reliably in low-bandwidth environments and supports repeated practice in a safe, non-judgmental setting. By providing consistent, objective spoken-language diagnostics, SEAP enables course creators and institutions to embed oral assessment into mainstream learning workflows, strengthening communication readiness while supporting employability and lifelong learning goals.

Impact

27,000+

unique learners assessed

60,000+

spoken English assessments completed





WALKING TOWARD LITERACY TOGETHER

Supporting foundational reading in Rajasthan's government schools

Dhirendra Singh's own schooling ended in grade 3, but his belief in education did not. Today, he is determined that his children will have opportunities he never did.

Each morning, he walks his daughters, Chetna (11) and Bhavya (9) to their government school in Adarsh Nagar, Pali. Each evening, he returns to bring them home. The routine is simple, but for Dhirendra, it is a daily commitment to their future.

"My daughters must study," he says quietly.

Dhirendra works as a hamma in a transport business, unloading goods from trucks and tempos and earning about ₹15,000 a month. The work is physically demanding and the days are long, but education, he says, is non-negotiable.

Earlier this year, when Chetna and Bhavya enrolled in school, they were still at very early stages of reading. Their teacher, Ajanta Jhuriya, recalls that students often enter age-appropriate classes with different starting points in foundational literacy.

To support teachers in understanding these differences, the Government of Rajasthan has deployed the Oral Reading Fluency (ORF) tool on the state's Shikshak app, with technical support from Wadhvani AI. The AI-enabled assessment allows teachers to conduct short oral reading checks and quickly understand each child's reading ability.





Using ORF, students are automatically grouped into learning cohorts—Beej (Seed), Ankuran (Sprout), Pushpan (Bud), and Phalan (Flower)—based on their reading fluency. After each assessment, the app organises students by reading level and provides teachers with cohort-aligned instructional guidance. These quick, standardised insights help teachers plan targeted support while continuing regular classroom teaching.

With classroom instruction, regular practice, and Ajanta’s guidance, both sisters began making steady progress. Within three months, they started reading aloud, first with hesitation, then with growing confidence.

At home, Dharendra sees the difference in small but meaningful ways: when his daughters read poems aloud, recognise words on shop signs, or bring books home from school.

He does not read assessment reports or fluency charts, but he understands what progress looks like.

“When they read,” he says, smiling, “I feel proud.”

In the classroom, tools like ORF help teachers quickly understand students’ reading levels, identify learning needs early, and track improvement over time.

Today, Chetna and Bhavya continue to learn - reading at school, at home, and sometimes aloud in the lane outside their house. Dharendra still walks beside them every day, just as he always has.

In one family’s daily routine, the shared effort of a parent, a teacher, and the public education system is helping children move forward—one word, one sentence, and one story at a time.



AGRICULTURE: AT A GLANCE

Strengthening agricultural intelligence and decision-making at system scale

From early risk signals to field data infrastructure, supporting governments and farmers with real-time visibility.

From pest outbreaks and weather alerts to reliable farm-level records, agriculture systems depend on accurate information. In practice, critical signals are often fragmented across sources and constrained by language and access barriers, limiting both early government response and farmer access to relevant updates.

Our agriculture solutions focus on generating actionable, real-time intelligence by scanning, classifying, and structuring agriculture-relevant information. By embedding AI into government agriculture platforms and frontline workflows, these solutions strengthen monitoring, enable early alerts, and build reliable data infrastructure that supports evidence-based planning across the agriculture ecosystem.



Topline Impact

Multi-state
deployment

3 AI Solutions

integrated into official
agriculture portals and
field programs

353,158

agriculture news
interactions recorded
within one year

32,000+

farmers trained on
AI-enabled data field
collection systems

What AI Enabled



Early alerts



Timely
dissemination



Informed
decisions



Improved
system resilience

System Impact

- **Real-time advisory intelligence**

AI-enabled systems surface localized risk signals, weather insights, and crop-related guidance to support timely frontline response.

- **Early risk visibility**

AI-powered media scanning surfaces emerging alerts related to pests, weather, markets, and policy.

- **Farmer access at scale**

Conversational and platform-integrated tools enable multilingual advisories to reach farmers and extension networks at scale.

- **Program efficiency**

Structured digital data supports improved monitoring, grievance redressal, and more effective resource targeting across agriculture programs.

INTEGRATED AGRICULTURE NEWS MONITORING (IANM)

(also known as Krishi 24/7)

The Integrated Agriculture News Monitoring (IANM) solution is an AI-powered media scanning and intelligence tool that supports governments and farmers in accessing timely, relevant agriculture information at scale. Developed in collaboration with the Extension Division of the Ministry of Agriculture and Farmers' Welfare (MoAFW), the solution consolidates agriculture-relevant news in one place and surfaces unusual or emerging alerts related to pests, weather events, market prices, and policy announcements, enabling informed administrative monitoring and farmer access across the agriculture ecosystem.

Deployed on the Madhya Pradesh State Agriculture Department portal, the Kisan Sanchar portal, and the SmartU WhatsApp platform.

Impact

Within one year of deployment, the system recorded

353,158

clicks on agriculture news articles.





CROPACE

CropAce is a computer vision-led AI solution that enables early identification of crop pests, diseases, and stress conditions directly from field images, supporting timely action in real farm environments. Trained on diverse datasets from Indian farms and optimized for variable lighting, camera quality, and outdoor conditions, the solution accurately differentiates between pest infestations, diseases, nutrient deficiencies, and non-threat conditions. CropAce translates image-based diagnosis into actionable guidance aligned with extension protocols, helping farmers and frontline workers make safer, informed decisions before crop damage escalates. At a system level, aggregated insights enable extension teams to monitor emerging patterns and respond proactively to potential outbreaks.





AGRIAI COLLECT

AgriAI Collect is an AI-enabled field data collection solution that digitizes farm-level information in real-world conditions, enabling faster, more accurate, and more inclusive agricultural data capture at scale. Designed for frontline use, the mobile-first platform supports voice-based data entry across two Indian languages (Hindi and Marathi) and operates reliably in low-connectivity environments, syncing automatically when connectivity is available. Built-in supervisor validation workflows strengthen data quality and reliability, while real-time dashboards provide visibility into field coverage, progress, and operational gaps. By converting fragmented, manual records into structured, trustworthy datasets, AgriAI Collect strengthens program planning, monitoring, and evidence-based decision-making across agriculture initiatives.

Impact

32,000+
farmers reached

21+
crops monitored





HOPE IN THE FIELDS

Mahendra & Manjusha's Story

For generations, farming has shaped the daily rhythm of Mahendra Wadaskar and his wife Manjusha's life in Wadha village in Chandrapur district, Maharashtra. Each morning begins early—finishing household chores, sending their daughters to school, packing a simple lunch, and walking together to their fields near the Wardha River.

For Mahendra, farming is more than an occupation.

"We can't imagine doing any other job," he says. "Farming gives us ownership. We don't want to work under anyone and listen to their instructions."

But in recent years, that sense of certainty has been tested. Unpredictable rains, rising input costs, pest attacks, and fluctuating market prices have made farming increasingly difficult.

"We lose around 30–35% of our crop due to pests," Mahendra explains.

Manjusha admits that the uncertainty can feel overwhelming at times.

"Sometimes it feels like... should we even continue farming?"

Despite these challenges, the family continues to adapt and look for better ways to protect their crops and income.

Recently, Mahendra and Manjusha began using **CropAce**, an AI-enabled pest identification tool developed by Wadhvani AI and deployed through field partners to support farmers with timely advisory.

Before using the app, pest management decisions depended largely on experience and informal advice—consulting agri-retail shopkeepers, sharing photos of pests with other farmers on WhatsApp, or trying to identify symptoms themselves.





“We used to try to identify pests on our own,” Mahendra says, “but it’s not always the right pest, and not always at the right time.”

Now, when they notice damage in their cotton field, Mahendra simply takes a photograph using the CropAce app. Within seconds, the system identifies the pest and suggests the appropriate treatment.

“With CropAce, we take a photo and get the pest name and the right treatment immediately. It’s very easy,” he says.

This is their first season using the tool, but they can already see a difference. Pest control feels more manageable, and field decisions more confident. They hope to begin using the app from the start of the next Kharif season to detect problems even earlier.

Over time, more precise pest management is also helping them rethink pesticide use.

“Overuse of pesticides ruined our soil,” Mahendra reflects. “Now we spray only what is needed. The app tells us how much!”

Healthier soil today means more reliable harvests in the future.

The couple owns three acres of land and cultivates five additional acres on a shared arrangement, growing soybean, toor, cotton, wheat, and gram across seasons. Their daughters, Yuvika and Devika, enjoy visiting the fields during school holidays.

“Our daughters love farming,” Mahendra says with a laugh.

But Manjusha adds a practical concern familiar to many farming families.

“If farming keeps giving losses, why will our daughters continue it—even if they love it? We feed India, but first we must be able to feed our own family.”

For Mahendra and Manjusha, tools like CropAce offer something simple but important: the ability to respond to problems earlier, protect their crops, and reduce uncertainty in decisions that affect their livelihood.

“If pests stay under control,” Mahendra says, “our farming can survive- and so can our dreams.”

CAPACITY BUILDING & GOVERNMENT ADVISORY

Enabling responsible AI adoption in public systems

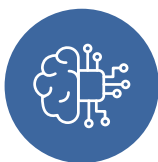
Wadhvani AI works alongside governments not only to deploy AI solutions, but to strengthen the institutional capacity required to govern, scale, and sustain them. Through strategic advisory, policy collaboration, and capacity-building programs, the organization helps embed AI responsibly within public infrastructure.

This work ensures that adoption is not technology-led alone, but supported by governance readiness, operational capability, and long-term institutional ownership.

Strategic advisory to the IndiaAI Mission

Wadhvani AI serves as a strategic partner to the Government of India's IndiaAI Mission, contributing to five of its seven national pillars. The collaboration focuses on shaping policy, anchoring pilot deployments, and strengthening national AI infrastructure.

Key areas of support include:



Co-drafting AI policy frameworks under the IndiaAI Mission



Designing the roadmap for the IndiaAI Safety Institute



Supporting international AI standards engagement through ISO/IEC



Advising evaluation frameworks for AI/ML schemes and beneficiaries



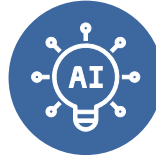
Conducting hackathons to integrate AI into government workflows



Delivering capacity-building workshops for policy and technical teams



Providing long-term advisory to BHASHa INterface for India (Bhashini)



Supporting AI adoption across central ministries



Offering UX, backend, and integration advisory

This engagement strengthens India's national governance architecture for AI while advancing multilingual digital public infrastructure.

Strengthening education systems through policy collaboration

Wadhvani AI collaborates with the Ministry of Education to support inclusive technology adoption in higher education. The partnership focuses on identifying systemic gaps, designing actionable solutions, and enabling policy-aligned implementation.

A key initiative includes the conceptualization of Centres of Excellence for AI in Education — innovation hubs designed to support research, experimentation, and institutional capacity building. A framework has been submitted to the Ministry with a vision to establish 40 AI departments across central universities.

This work aims to institutionalize AI innovation within India's education ecosystem through structured, evidence-driven programs.

Building institutional capacity for AI

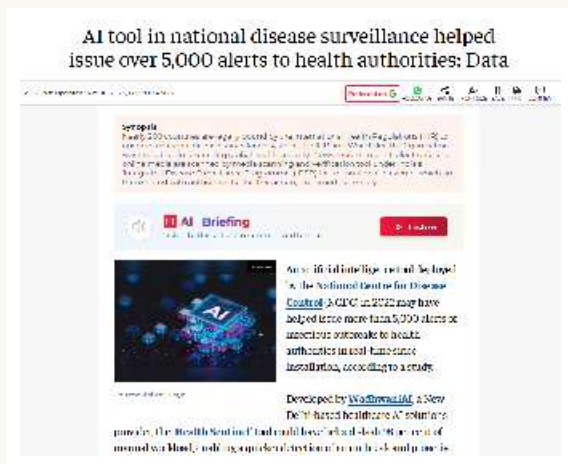
Wadhvani AI co-develops tailored learning journeys for ministries, state departments, and civil society organizations. These programs equip both senior leadership and frontline personnel with the knowledge required to adopt and govern AI responsibly.

Capacity-building initiatives focus on practical implementation, ethical governance, and operational confidence. The organization works with national and global development partners to support public institutions in translating AI potential into measurable impact.

MEDIA HIGHLIGHTS

The Economic Times:

“AI tool in national disease surveillance helped issue over 5,000 alerts to health authorities” — Detailed the 'Health Sentinel' tool developed with the NCDC, which reduced manual workload by 98%.



Moneycontrol:

“Google pledges \$15 million to boost India’s AI research” — Reported on major philanthropic funding to Wadhvani AI for educational and research scaling.

The Print

From cancer to diabetic retinopathy, how AIIMS is betting big on AI to aid in diagnostics

From cancer to diabetic retinopathy, how AIIMS is betting big on AI to aid in diagnostics

Wadhvani AI — an independent non-profit institute developing AI-based solutions for underserved communities in developing countries — is also collaborating with AIIMS to create AI-based solutions for chest radiography and diagnose diseases like tuberculosis, diabetic retinopathy, breast cancer, kidney and sexually transmitted infections.

“We aim to develop scalable AI-driven solutions for public health, leveraging India’s data and medical expertise to address its unique healthcare challenges,” Nikul Jain, Director, Products, Wadhvani AI, told ThePrint.

The news includes building diagnostic, predictive and decision-making tools for deployment in remote areas, upskilling healthcare workers, and integrating these solutions with national health programmes to enhance accessibility and public awareness, he added.

Dr Bangarajan underscores that “implementation is a huge challenge, which we often underestimate”.

Reflecting on the initiative, she said, “Our major challenge is the importance of extensive testing before deployment. Differences in populations, equipment, and methods of data capture — such as between AIIMS and peripheral centres — can lead to significantly varied results”.

The Hindu Businessline:

“Nipping neonatal disorders in the bud” — Highlighted the Shishu Maapan tool helping ASHA workers identify low-weight babies via smartphones.



The Hindu:

“AI tool seeks to boost Gujarati reading skills of students” — Featured the launch of Indian language LLMs to improve reading fluency.



YourStory:

“Beyond the Hype: How India’s AI Is Solving Real-World Problems”

Making AI for Bharat - BusinessWorld



The Hindu BusinessLine:

“Wadhvani AI helps cotton farmers cut pesticide use by 20% via CottonAce” — Covered the impact of pest surveillance in 11 cotton-growing states.

Wadhvani AI helps cotton farmers cut pesticides’ use by 20% via CottonAce

The pest surveillance has been expanded by the organisation to paddy, maize and chilli in pilot mode

By Subramani Ra Mancombu

Updated - May 30, 2025 at 12:04 PM. | Chennai



J P Tripathi, Director of Agriculture Programs at Wadhvani AI

Wadhvani AI, a non-profit organisation founded by Indian-American tech entrepreneurs Romesh and Sunil Wadhvani, has been able to help cotton farmers reduce the use of pesticides by 20 per cent through its CottonAce programme.

Mint:

“TB is rising among the middle class. Here’s how India plans to eliminate it”



The Indian Express:

“How to Design AI Solutions for Indian Problems” — A deep dive into localized AI architecture for the agricultural sector.

Business Standard:

“Our AI-driven solutions will help millions of people: Wadhvani AI CEO” — An interview with Shekar Sivasubramanian on scaling social-good technology.

Academic AI seldom reaches mkt: Wadhvani AI chief



RESEARCH AT WADHWANI AI

At Wadhvani AI, research is inseparable from deployment. Our scientific work is grounded in public systems, shaped by field realities, and evaluated against population-scale outcomes. Each contribution reflects a continuous feedback loop between applied deployment and technical innovation. Challenges from the field inform new models, and new models are built to operate reliably in the environments they serve.

2025 Research Publications

- **Artificial Intelligence–Augmented Public Health Interventions in India**
Health Affairs Scholar • Journal • 2025

Shekar Sivasubramanian, Alpan Raval

Examines how AI-enabled interventions can strengthen public health delivery at population scale within India’s government systems.

- **Artificial Intelligence for Advancing Eye Care in Resource-Poor Settings: Assessing the Predictive Accuracy of an AI Model for Diabetic Retinopathy Screening in India**
Global Epidemiology • Journal • 2025

Rohan Chawla, Prachi Karkhanis, Malay Shah, Aritra Das, Rishabh Sharma, Dhvani Almula, Pradeep Venkatesh, Harsh Vardhan Singh, Mukul Kumar, Ramanuj Samanta, Vinod Kumar, Amar Shah, Bhavin Vadera, Nakul Jain, Akanksha Sen, Shyamsundar Shreedhar, Vipin Garg, Soma Dhavala, Kowshik Ganesh, Srinivas Rana, Radhika Tandon

Validates AI-based diabetic retinopathy screening in low-resource environments, demonstrating reliable early detection at scale.

- **Health Sentinel: An AI Pipeline for Real-Time Disease Outbreak Detection**

ACL 2025 Workshop on NLP for Positive Impact • Workshop Paper • 2025

Devesh Pant, Rishi Raj Grandhe, Jatin Agrawal, Jushaan Singh Kalra, Sudhir Kumar, Saransh Khanna, Vipin Samaria, Mukul Paul, Satish V. Khalikar, Vipin Garg, Himanshu Chauhan, Pranay Verma, Akhil VSSG, Neha Khandelwal, Soma S. Dhavala, Minesh Mathew

Introduces an AI pipeline that scans large-scale media signals to detect emerging disease outbreaks in real time.

- **Generalized Cross-Domain Multi-Label Few-Shot Learning for Chest X-Rays**
International Symposium on Biomedical Imaging (ISBI) • Conference Paper • 2025
Aroof Aimen*, Arsh Verma, Makarand Tapaswi, Narayanan C. Krishnan
*PhD intern at Wadhvani AI (Sep 2022 – Aug 2023)
Advances few-shot learning techniques for medical imaging to improve diagnostic robustness with limited labeled data.
- **Evaluating Robustness in LLM-Based Medical Chatbots**
CHI 2025 Workshop on Human-Centered Evaluation and Auditing of Language Models • Workshop Paper • 2025
Mukul Kumar, Alugubelli Dinesh Reddy, Sai Nikhilesh Reddy
Evaluates the reliability and safety of large language models used in healthcare chatbot applications.
- **Garuda: An Indian Agricultural LLM and Krishi Saathi Advisory Chatbot**
AAAI 2025 Workshop on Open-Source AI for Mainstream Use • Demonstration Paper • 2025
Chintan Donda, Manan Uppadhyay, Mihir Goyal, JP Tripathi, Mohammad Salman
Presents an agriculture-focused language model designed to support multilingual advisory services for farmers.

Abbreviations

A

AI	Artificial Intelligence
AIIMS	All India Institute of Medical Sciences
ANC	Antenatal Care
ANM	Auxiliary Nurse Midwife
ANMOL	Auxiliary Nurse Midwife Online
ASHA	Accredited Social Health Activist
ASR	Automatic Speech Recognition
AWW	Anganwadi Workers

C

CATB	Cough Against TB
CDSS	Clinical Decision Support System
CDST	Culture Drug Susceptibility Testing
CHO	Community Health Officer
CTD	Central Tuberculosis Division

D

DR	Diabetic Retinopathy
DR-TB	Drug-Resistant Tuberculosis

F

FTA	Farm Tele-Advisers
------------	--------------------

H

HBNC	Home-Based Newborn Care
HWC	Health and Wellness Center

I

ICAR	Indian Council of Agricultural Research
ICDS	Integrated Child Development Services
ICMR	Indian Council of Medical Research
IRL	Intermediate Reference Laboratories
ISO/IEC	International Organization for Standardization/International Electrotechnical Commission

K

KCC	Kisan Call Center
------------	-------------------

L

LEARN	Learning Enhancement and Assessments for Revamping NMEICT
LFU	Loss to Follow Up
LLM	Large Language Model
LPA	Line Probe Assay

M

MDS	Media Disease Surveillance
------------	----------------------------

MeitY	Ministry of Electronics and Information Technology
MNCH	Maternal & Newborn Child Health
MoAFW	Ministry of Agriculture and Farmers' Welfare
MoE	Ministry of Education
MoHFW	Ministry of Health and Family Welfare
MoWCD	Ministry of Women and Child Development
MP	Madhya Pradesh
MSVC	Media Scanning and Verification Cell

N

NCDC	National Centre for Disease Control
NCIPM	National Center for Integrated Pest Management
NeGD	National e-Governance Division
NEP	National Education Policy
NIPUN	National Initiative for Proficiency in Reading with Understanding and Numeracy
NLP	Natural Language Processing
NMEICT	National Mission on Education through Information and Communication Technology
NTEP	National Tuberculosis Elimination Programme

P

PAF	Patient Assistance Form
PATO	Prediction of Adverse TB Outcomes
PHC	Primary Health Center

PHMP | Public Health Management Platform

PROS | Pregnancy Risks and Outcomes Stratification

PwTB | Persons with Tuberculosis

O

ORF | Oral Reading Fluency

R

RAI | Responsible AI

S

SEAP | Spoken English Assessment and Practice

SWAYAM | Study Webs of Active-Learning for Young Aspiring Minds

T

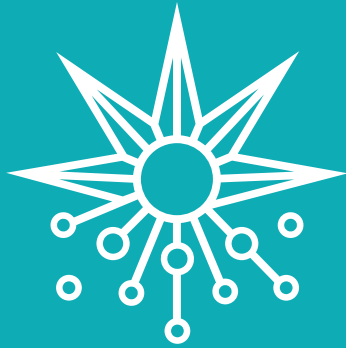
TB | Tuberculosis

U

UP | Uttar Pradesh

V

VMTB | Vulnerability Mapping for Tuberculosis



WADHWANI AI

70, Ring Road, 2nd Floor, Lajpat Nagar - III,
New Delhi - 110024, India